

SeaPAC™

Flat Panel Solutions



www.tacticalsupplypakistan.com

info@tacticalsupplypakistan.com

Modular.



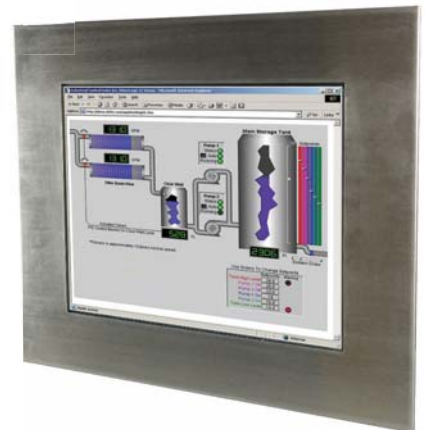
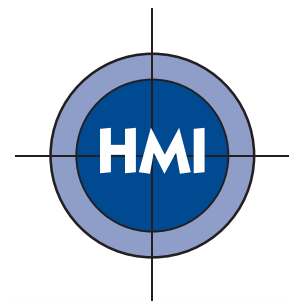
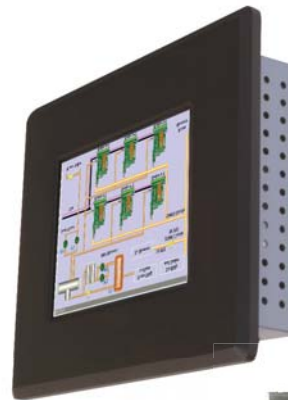
SeaPAC™

SeaPAC™ flat panel touchscreen computers are designed to operate over a wide temperature range without fans or other moving parts. Available with bright, AMTFT LCDs ranging in size from 6.4" to 17", SeaPAC systems are perfect for a variety of industrial control, machine interface, and point-of-sale applications where small size and extreme reliability are a must. All SeaPACs offer:

- > **Solid-State Operation**
- > **Versatile I/O Selection**
- > **Wide Temperature Range**
- > **Shock and Vibration Tolerance**
- > **Easy Expansion and Upgrade**
- > **Long-Term Availability**
- > **Dependable Design Consistency**

SeaPAC systems include a rugged panel-mount bezel that provides NEMA 4/IP65 protection from sprayed liquids on the front surface. The optional resistive touchscreens allow intuitive operator interface and offer years of durable service. For flexible local and remote I/O expansion, SeaPACs expand using Sealevel's SeaI/O data acquisition modules. The systems are rated for 0-50°C operation, and VESA mounting brackets are available for attaching the systems to mounting arms.

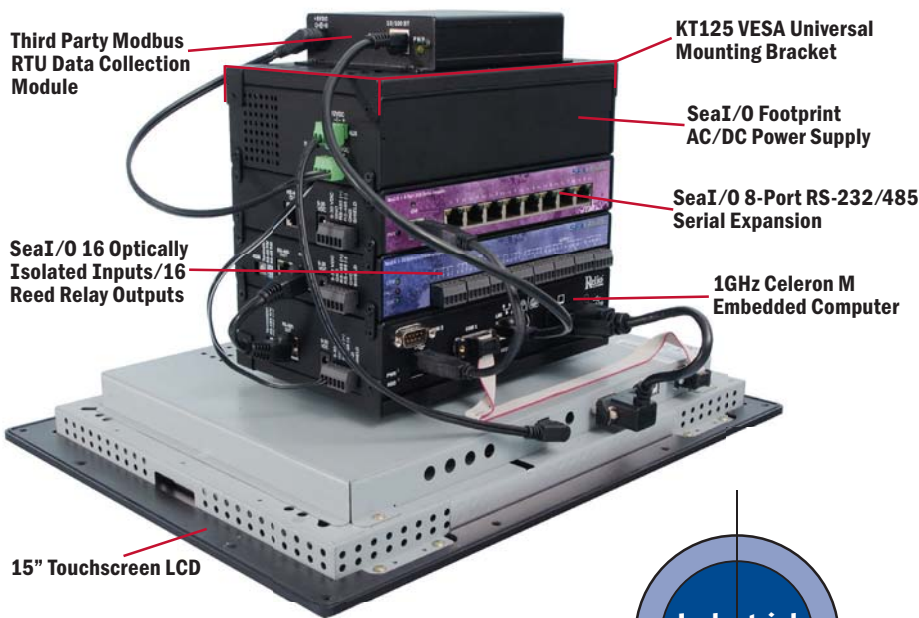
Windows® Embedded operating systems are the perfect choice for SeaPAC systems. Sealevel offers application assistance for efficiently transferring customer applications to the Windows Embedded platform running from CompactFlash. For users that require disk storage, optional high-temperature hard drives are available.



Also available in stainless steel.

Fanless.

Typical SeaPAC application with digital, serial, and analog expansion



Industrial Computing

Available with a high-performance 1GHz/600MHz Intel® Celeron M or a 500MHz AMD® LX800 processor, SeaPACs are equipped with robust standard I/O features including 10/100Base-T Ethernet, serial ports, and high-speed USB 2.0 ports.

SeaPACs are powered by 12VDC, and power is provided to SeaI/O expansion modules using convenient pass-through connectors. Choose from Reed and Form C relays, optically isolated inputs, TTL, A/D, and D/A options. SeaPACs communicate with SeaI/O modules using Modbus RTU. This allows one or more SeaI/O modules to be physically attached to the SeaPAC or located remotely up to 4000 feet away. Both the processor and I/O modules can be easily removed from the display assembly, making field upgrades easy.

SeaPAC Features

Active Matrix TFT LCDs
> 6.4", 8.4", 10.4", 12.1", 15", 17"

Optional Resistive Touchscreen

1GHz/600 MHz Intel ULV Celeron M or AMD LX800 500MHz processor

CompactFlash Socket

Optional High-Temperature Hard Drive

Up to 1GB RAM

10/100BaseT Ethernet

Two or Four Serial Ports

Up to Four High-Speed USB 2.0 Ports

12VDC Power Input

Wide Temperature Operation - 0°C to 50°C

Serial, Digital, and Analog Expansion Using SeaI/O Modules



Distributed I/O



Easily add digital, analog, serial or other expansion to SeaPAC systems using Modbus RTU. The Modbus RTU interface allows the use of any industry-standard Modbus compliant device. Choose Sealevel's popular SeaI/O family expansion modules or mix and match 3rd party Modbus devices to create an optimal I/O network for your application.

For easy software integration, application programs or 3rd party software can use Sealevel's SeaMAX library or industry standard Modbus RTU protocol. To facilitate rapid development, helpful diagnostic and debug utilities are also included.



SeaI/O-410N

- > 16 non-polarized optically isolated inputs
- > 30VDC max. input
- > 300V isolation
- > 16 SPST Form A Reed relays
- > 60VDC @ 500mA max. contact rating



SeaI/O-420N

- > 16 non-polarized optically isolated inputs
- > 30VDC max. input
- > 300V isolation
- > 8 SPDT Form C relays
- > 60VDC @ 2A max. contact rating



SeaI/O-430N

- > 32 non-polarized optically isolated inputs
- > 30VDC max. input
- > 300V isolation



SeaI/O-440N

- > 32 SPST Form A Reed relays
- > 10VA max. power
- > 60VDC max. contact voltage
- > 500mA max. contact current



SeaI/O-450N

- > 16 SPDT Form C relays
- > 60VDC max. contact voltage
- > 2A max. contact current
- > Normally-open and normally-closed contacts on connector



SeaI/O-462/463N

- > 96 bits of buffered TTL I/O
- > Programmable as input or output in 8-bit groups
- > 462 Series - Two DB-78 connectors
- > 463 Series - Standard 50-pin ribbon cables



SeaI/O-470N

- > 8 differential or 16 single-ended 12-bit A/D inputs
- > Inputs configurable for 4-20mA inputs
- > 2 12-bit D/A outputs
- > 8 optically isolated inputs
- > 8 open-collector 24V outputs



SeaI/O-520N

- > 8 non-polarized optically isolated inputs
- > 30VDC max. input
- > 8 high-current Form C relays
- > 240VAC/125VDC max. contact rating
- > 6A max. contact current



SeaI/O-641U/647U

- > 641U: 4 USB to RS-232 ports
- > 647U: 4 USB to RS-232/485 VersaCom ports
- > USB powered
- > Options allow powering peripherals over serial
- > Optional RJ45 to DB9 adapters



SeaI/O-681U/687U

- > 681U: 8 USB to RS-232 ports
- > 687U: 8 USB to RS-232/485 VersaCom ports
- > USB powered
- > Options allow powering peripherals over serial
- > Optional RJ45 to DB9 adapters



SeaI/O-270U

- > 7 Port isolated USB Hub
- > 1200VAC isolation
- > Protects host from damage in harsh industrial environments
- > SeaLATCH® locking USB Type A and B connectors