



TACTICAL
— SUPPLY PAKISTAN —

OSPREY™



comprehensive under vehicle examination

The OSPREY-UVX™ POV (Passenger vehicle configuration) provides an undercarriage Backscatter (Bx) image of the entire conveyance along with a through vehicle transmission image as an option. This system operates as a standalone system for enhanced detection and inspection at Border Crossing, Security Checkpoints, Critical Infrastructure and High Threat facilities.

THOROUGH, RELIABLE AND ACCURATE



x-ray generator

225 KeV X-ray tube, no live source



detector

Multiple detector modules to cover the full vehicle undercarriage



scan activation

Automated scan activation integrated with the traffic management and safety systems



system power

208 VAC, 3 phase, 50/60 Hz, 60 amp (standard)
220-240 VAC, 1 phase, 50/60 Hz, 100 amp (alternate)
- Configuration for facility power interface defined during site review and program requirements



environmental usage

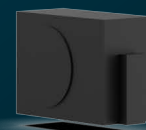
IP54 rating, operational temperature: -10C to 50C,
relative humidity: up to 98% non-condensing

structure footprint

- / Width: 12.1' (3.7m)
- / Length: 4.27' (1.3m)
- / Height: 11.5' (3.5m)

scan tunnel

- / Width: 10' (3.05m)
- / Height: 10.3' (3.14m)





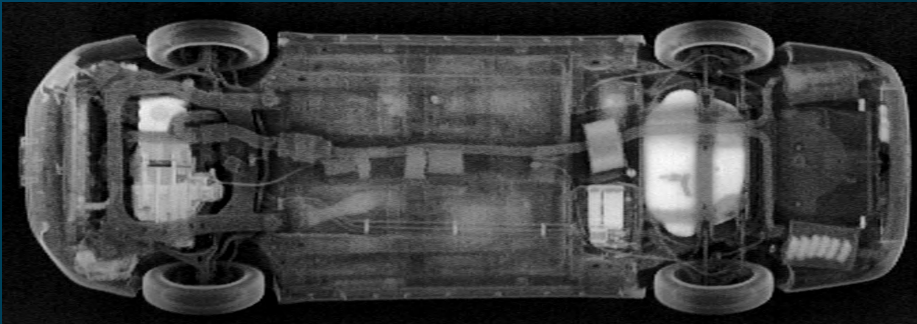
one sense ahead to enhance security and help save lives.

Detects and sees what others do not.

The Osprey products can help you with your mission and needs regardless of the industry you are in, with the flexibility of functions across the various Osprey models. Whether you are protecting borders, keeping personnel or visitors safe, or preventing illicit items from entering your specified area, the Osprey provides the best solution to meet your requirements.

- / Customs and Border Security
- / Critical Infrastructure
- / Military and Defense
- / Embassy and Government Facility Protection
- / Seaports
- / Event Security
- / Healthcare Facilities
- / Airports
- / Schools
- / Prisons

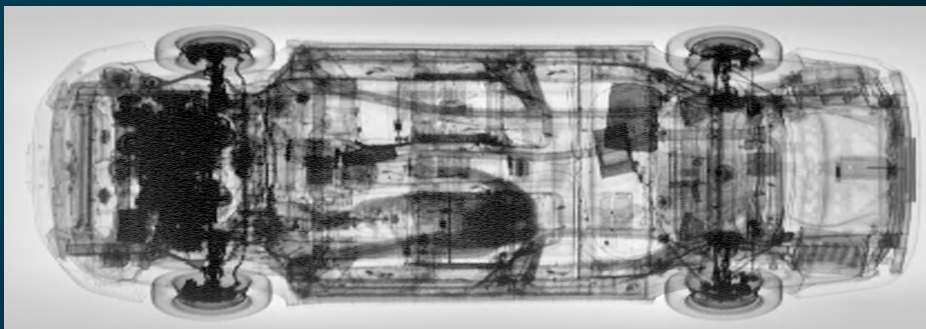
Backscatter:



options

- / Automated Traffic Controls (traffic lights, control gates, bollards)
- / Vehicles Identification (LPRs)
- / Remote Tablet for Image Review
- / Scan Lane Monitoring
- / Command and Control Integration
- / Transmission Detector
- / Extended Warranty

Transmission:



deployment

Civil works: In ground - client site review required for deployment scope. Civil Construction Requirements (CCR) drawing package available to support placement, power & communication interfaces, drainage, operational booths, and canopy options

Installation: Experienced Installation team supports the complete deployment process - civil works, electrical, mechanical, communication, and site acceptance