



TACTICAL
— SUPPLY PAKISTAN —

OSPREY™



MTX / Mobile Trailered Vehicle X-Ray

comprehensive vehicle inspection on the go

The Osprey Mobile Trailered Vehicle X-ray (MTX) system, is a self-contained trailer-mounted X-ray system that can be easily towed by a variety of vehicles, including SUVs and pickup trucks. The Osprey MTX can also be detached from the tow vehicle, allowing customers the flexibility of using vehicles for other purposes while continuing X-ray screening.

THOROUGH, RELIABLE AND ACCURATE



x-ray generator

225KeV X-ray tube, no live source.



detector technology

Innovative detector modules produce the highest quality images for both backscatter and transmission X-ray technologies.



modalities of detection

The backscatter X-ray displays organic contraband and threats concealed within the scan targets. The dual energy transmission X-ray displays metallic threats and deeply concealed contraband.



scan activation

Manual operation and sensors for automated operation.



system power

Optional battery power is available for reduced cost of ownership and a standard UPS protects the electronics subsystem for higher reliability.



environmental

System operates within 0°C to 45°C and relative humidity up to 95%. Options are available for different climates.



user interface

Operator/Analyst Interface can be docked in the vehicle during mobile operation with the ability to operate wirelessly. Viken will collaborate with the client to deploy the optimal user interfaces for maximum operational efficiency.



analyst tools

Image analysis tools include: Adaptive Contrast, Manual Contrast Adjustment, Zoom, Reverse Image, Color Palette, Image Slider, and Emboss.



scan targets

Market-leading imaging field of view allows a broad application of scan targets: passenger vehicle, commercial vehicles (cab and cargo), stacked sea containers, and palletized and break bulk cargo.

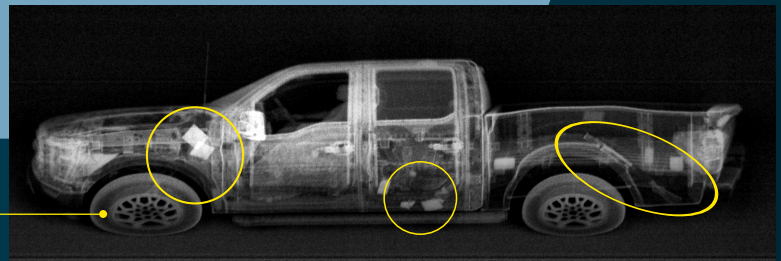




synthetic drugs have changed the rules of the game - so has Viken

the edge your mission needs

The Osprey MTX is easy to maneuver and deploy, which is useful when navigating in tight spaces or driving on narrow roads. The innovative design gives inspection officers photo-realistic images of the contents and provides a complete field of view of vehicles of a wide range of heights, including the tires of passenger and commercial vehicles. The transmission and backscatter images reveal threats like explosives, drugs, currency, and fraudulent manifest items like cigarettes and alcohol. The Osprey MTX is ideal for security screening at campuses, theme parks, sea ports, land borders, airports, sports arenas, hotels, and conference centers.



Detect anomalies concealed within vehicles using Viken's state-of-the-art backscatter and transmission X-ray technology

PRODUCT SPECIFICATIONS

field of view

Scan Height = 12' (3.65m) at distance of 3.6' (1.1m) from MTX

Scan Height = 14' (4.26m) at distance of 5.5' (1.67m) from MTX

radiation safety

Radiation dose to vehicle occupants is less than 0.05uSv at a scan speed of 5mph. Additional integrated safety feature will shutdown X-ray emission if a vehicle stops in the scan tunnel or is traveling less than 2mph. The radiation exclusion zone is less than 0.5uSv/hr at the footprint boundaries of the system.

compliance and standards

/ ANSI N42.17-2009 radiation safety for personnel safety systems using X-rays or gamma radiation.

/ ANSI N42.46-2008 safety guidelines for measuring and quantifying image quality

/ ANSI N43.3-2008 for general radiation safety installations using non-medical X-ray, sealed gamma-ray sources, and engines up to 10MeV.

integration

The Osprey MTX architecture allows integration to command centers for inspection adjudication, data storage, and fusion to other checkpoint systems.

computer/control system

Computer equipment with capacity to save and extract images with storage capacity of at least 3TB and formats (UFF, TIF, PDF, etc.), so allowing the operator of the equipment to consult and extract the images. The full inspection record is available with images, peripheral data and other required meta data.

ACCESSORY

standard accessory INCLUDED

/ Osprey Remote Tablet
Provides mobile, close to system operation for the operation, analyst, and service functions necessary for complete system operation and support.

model	Mobile Trailer
dimensions	(LxWxH): 16.08' (4.89m) x 8.5' (2.59m) x 9.33' (2.84m)
scan modes & speeds	Both drive-by (mobile) and stationary (fixed) scan modes. Relative scan speeds up to 10mph (19km/h)
options	MTX offers various operational, imaging, and integration options to meet the clients mission needs. Transmission image technology.