



## Double Shots Stun Gun

Items	HUSHA TX200P	Taser X2
Picture		
Dimension	202mm*114mm*45mm	198mm*107mm*43mm
Weight	499g (With battery and 2 cartridges)	454g (With battery and 2 cartridges)
Electric Control Tech.	Rapid short pulse	Rapid short pulse
Output Voltage	<b>50-60KV</b>	45-55KV
Output Current	<1.5mA	<1.5mA
Pulse Frequency	19 PPS (Pulse Per Second)	19 PPS (Pulse Per Second)
Safety Switch	Ambidextrous	Ambidextrous
Electric Shock Duration (By Trigger)	5 Seconds	5 Seconds
Electric Shock Duration (By ARC Switch)	Short pressing for 5 seconds	Short pressing for 5 seconds
ARC Warning	Display warning arc without removing the cartridge	Display warning arc without removing the cartridge
Cross Connect Capability	Yes	Yes
Contact Stun	Yes	Yes
Cartridge System	Dual Cartridges	Dual Cartridges
Laser Sight	<b>Dual, equip with top green laser and bottom flasing red laser. Green laser light is much clearer in the sun during the day.</b>	Dual, both are red.

Items	HUSHA TX200P	Taser X2
<b>LED Flashlight</b>	Yes	Yes
<b>Digital Display</b>	Yes, the status of laser light and led light, power level, low power indicator, electric shock timing, the status of cartridges (not loaded, deployed, not deployed), etc.	Yes, the status of power level, low power indicator, electric shock timing, the status of cartridges (not loaded, deployed, not deployed), etc.
<b>Ingress Protection</b>	<b>IP57</b>	IP52
<b>Battery Cell Type</b>	Lithium Rechargeable	Lithium manganese (Non Rechargeable)
<b>Battery Capacity</b>	<b>400 5-second electric shock</b>	500 5-second electric shock (Non Rechargeable)
<b>Motive Force</b>	High compressed gas(N2)	High compressed gas(N2)
<b>Maximum Range</b>	6 meters	4.6 meters, 7.6 meters
<b>Data</b>	Data downloading	Data downloading
<b>Cartridge Type</b>	<b>3 Types: Electric shock cartridge, Pepper spray cartridge, Remote restraint cartridge</b>	Electric shock cartridge
<b>Cartridge Switch</b>	Yes. Turn off the safety switch and trun it on again within 3 seconds.	Yes. Press and release (quickly tapping once) the ARC switch selects the next available cartridge.
<b>Husha Competitiveness</b>	<ol style="list-style-type: none"> <li>1. Higher voltage output provides better effect of eletric shock while lower current output makes it safe.</li> <li>2. Compared with red laser light, green laser light is much more clear in the sun during the day.</li> <li>3. Waterproof IP57, can be used in humid or rainy environment.</li> <li>4. Supply with rechargeable battery, cost-effective and environmentally friendly.</li> <li>5. Multiple cartridges optional.</li> </ol>	



# TX200P



Black

Yellow

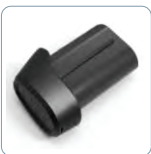
**HUSA TX200P**  
Double Shots Smart Electronic Control Device

TX200P is designed to stop violent and illegal activities of individuals, while it has no mortal effect on the suspect. Ideally to be used for patrols on the streets and in traffic stations, hospitals, courts of justice, prisons, etc.

- ▶ **SAFE to use** - Proven non-mortal to the suspect.
- ▶ **FAST to use** - Effective to control the suspect immediately.  
An immediately available back-up shot in case missing the first shot.
- ▶ **EASY to use** - Stun the suspect in close range or in a distance by pulling trigger; Dual laser aiming.
- ▶ **READY to use** - Reasonable price.



Cartridge



Battery



Holster



USB Type-C



Storage Case

## FEATURES



### Back-up shot

An immediately available back-up shot in case missing the first shot.



### Cartridge Switch

Cartridge can be switched from one to another by safety switch.



### Safety Current

Less than 2mA, safe to human body, conforming to international standard.



### 5S Countdown

During electric stun performing, the digital display shows 5 seconds countdown.



### Safety Switch

Ambidextrous safety switch with green mark of flash lighting; can be cut off at any time for safe use.



### LED light

Designed with LED light, which greatly improves users' vision at night.



### BWC Activation (Option)

When the safety switch is turned on, body worn camera nearby will be activated into record mode.



### Ingress Protection

Working on rainy days and high humidity environment normally.



### Pepper Spray (Option)

Can be applied flexibly according to practical tactics, maximum range is 6 meters.



### Remote restraint (Option)

Applied to control the suspect in a distance, maximum range is 6 meters.



### Stun in a Distance

Applied to control the suspect in a distance, maximum range is 6 meters.



### Stun in Close Range

Applied to attack the suspect in close range, without loading a cartridge.



### Laser Aiming

Designed with green laser light, which is clear in the sun during the day.



### Rechargeable

Apply for Rechargeable and non rechargeable battery.



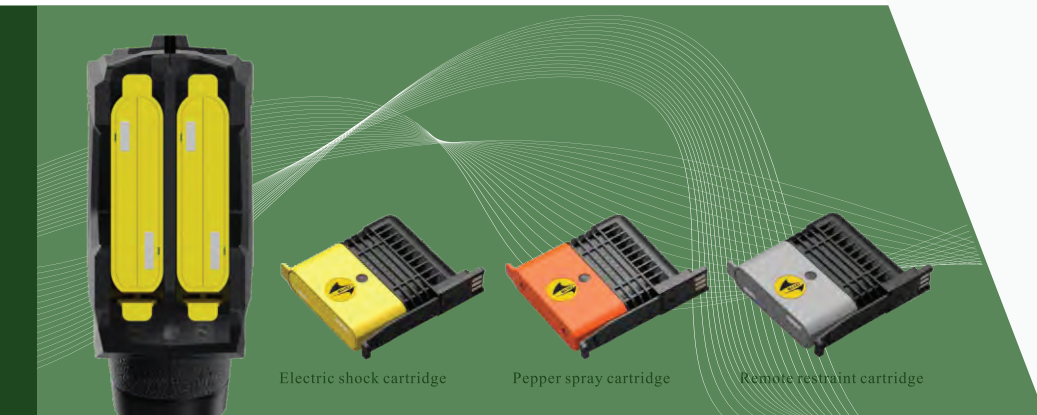
### Data Function

Designed with functions of data recording and downloading.



### ARC Switch

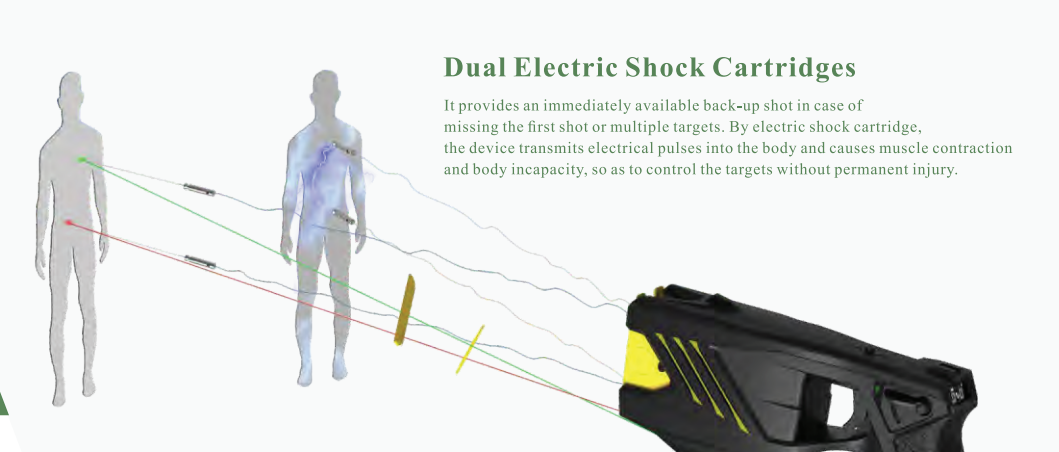
Only electric shock whenever loading a cartridge or not, short press for 5s manual-stop.



Electric shock cartridge

Pepper spray cartridge

Remote restraint cartridge



### Dual Electric Shock Cartridges

It provides an immediately available back-up shot in case of missing the first shot or multiple targets. By electric shock cartridge, the device transmits electrical pulses into the body and causes muscle contraction and body incapacity, so as to control the targets without permanent injury.

### Multi-tactical Solutions

It is compatible with three types of cartridges, electric shock, pepper spray and remote restraint cartridge, which can be loaded in any combination. There are 6 combinations of cartridges in total. It perfectly provides multi-tactical solutions for law enforcement officers.



### STRUCTURE

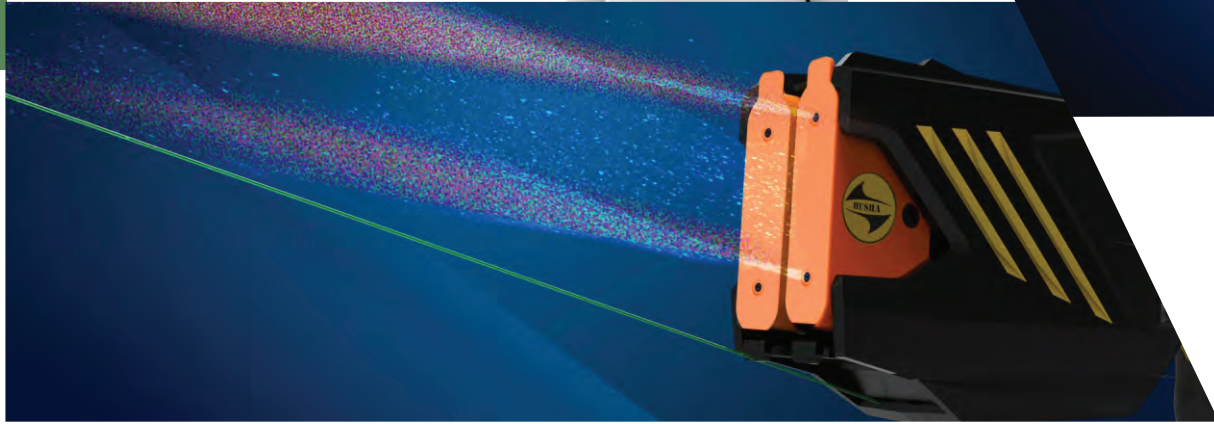
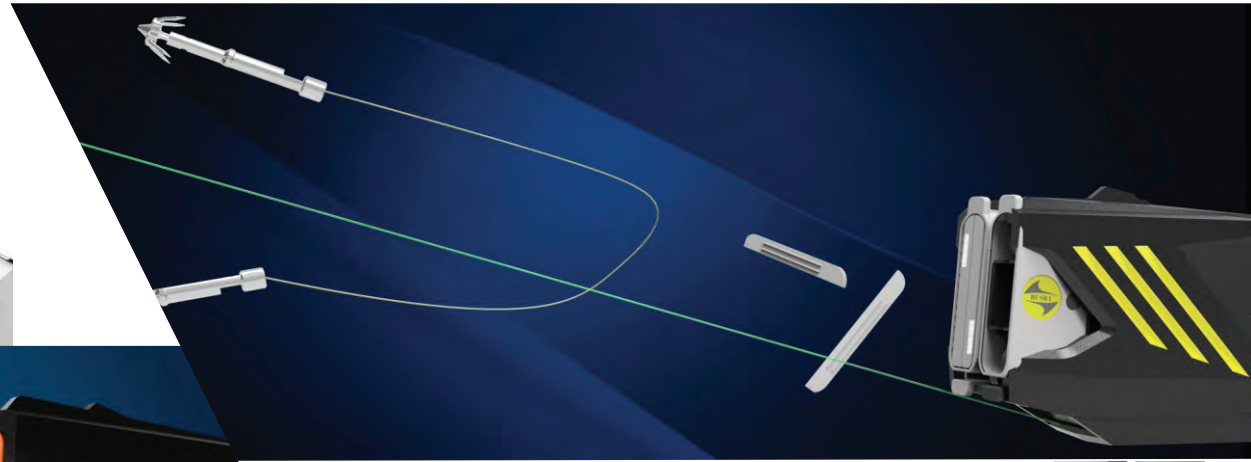


### SPECIFICATIONS

Model	TX200P
Dimension	202mm*114mm*45mm
Weight	≤500g
Output voltage	50±5KV
Output current	< 2mA
Pulse frequency	19±2Hz (PPS)
Motive force	High compressed gas(N <sub>2</sub> )
Maximum range	Electric Shock: 6meters Pepper Spray: 6meters Remote Restraint: 6meters
Battery	7.4V, 1400mAh, for over 400 times of 5-second electric stun
Operation Temperature	-20°C~55°C
Digital Display	Power level, Low power warning, Electric stun timing, etc.
Electric Shock Duration	Short press for 5s, Manual-stop Accessories
Waterproof	Ip57
OC Content	2.4%, ≥380000 SHU
Accessories	Cartridge*4, Battery*1, USB Type-C*1, Holster*1, Storage Case*1

## Dual Pepper Spray Cartridges

Impact the face of the target within 6 meters,  
Causing the target be blinded temporarily and lose balance.



## Dual Remote Restraint Cartridges

Restrain the target at about 6 meters away,  
So as to prevent the target from violent resistance or escape.

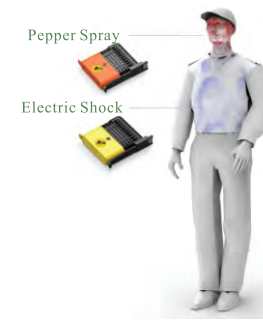


## Cartridge Switch

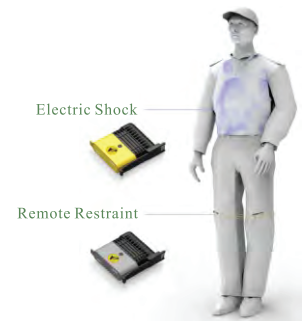
If you turn off the safety switch and turn it on within 3 seconds,  
it will switch one cartridge to another.



Remote Restraint+ Pepper Spray



Pepper Spray+ Electric Shock



Remote Restraint+ Electric Shock

### Waterproof IP57

Working on rainy days and high humidity environment normally.



**HUSHA**  
(APP)



### BWC Activation (Option)

HUSHA TX200P has built-in Bluetooth module. When the safety switch is turned on, Bluetooth signal will be sent out to activate body worn camera nearby into record mode, to ensure law enforcement evidences are recorded in time.



ECD with built-in Bluetooth module



Body Worn Camera



### Data Function

HUSHA TX200P is designed with functions of data recording and downloading. Electric shock data are accessible through HUSHA APP, including date, time, duration and so on, offering evidences to show if the device is used reasonably.

